

Vibe® Romans

NEW LOWER PRICING

**MARCH
2025**

ROMANS

Roman Blinds the easy way
Hassle free Roman Blinds
Quality, Stability & Excellence

**30%-70%
LOWER
PRICING**

- Pricing is 30% - 70% lower
- One price band all fabrics
- 70 colours of best selling fabrics
- Large Max size 2600 x 4000
- 1:1 Gearing Ratio
- Bonded Lining option
- Blackout lining Included in price
- Faster Delivery 6 - 14 working Days
- Easy to use sample book
- Heavy duty exceptional Hardware
- Smoother & quicker raise & lower
- Coulisse motorisation available



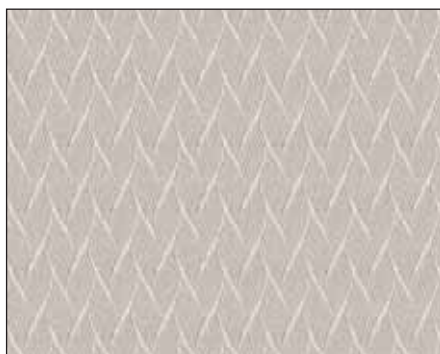
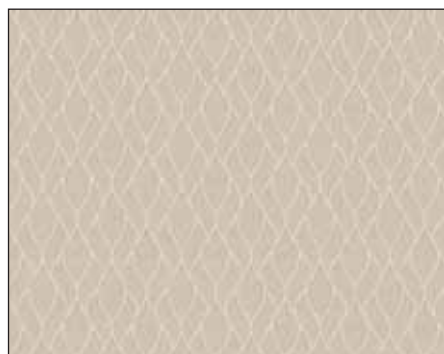
BLIND SIZE RECOMMENDED - WILL HAVE NO DEDUCTIONS



RECESS SIZE NOT RECOMMENDED - DEDUCTIONS ARE 10 - 12mm WIDTH & DROP



ALLOWED TOLERANCE IS +/- 3mm



**TRADE, RETAIL & ADJUSTABLE PRICE LISTS PLUS THE FULL PRICE LIST BROCHURE
ARE ALL AVAILABLE AT: www.dashcomponents.co.uk/retail-price-lists**

Vibe® Romans

NEW LOWER PRICING

**MARCH
2025**

ROMANS



BLIND SIZE RECOMMENDED - WILL HAVE NO DEDUCTIONS



RECESS SIZE NOT RECOMMENDED - DEDUCTIONS ARE 10 - 12mm WIDTH & DROP



ALLOWED TOLERANCE IS +/- 3mm

	Width (mm)	600	800	1000	1200	1300	1400	1600	1800	2000	2200	2400	2600
Drop (mm)	(Inches)	24	31	39	47	51	55	63	71	79	87	94	102
600	24	53.87	57.98	69.35	74.52	76.58	101.64	105.82	111.10	115.28	119.46	124.73	128.91
800	31	56.57	60.78	72.25	77.53	79.63	107.23	111.51	116.90	121.18	125.46	130.85	135.13
1000	39	59.27	63.58	75.15	80.53	82.69	112.82	117.20	122.70	127.09	131.47	136.97	141.35
1200	47	61.68	65.99	77.56	82.95	85.10	117.69	122.07	127.58	131.96	136.35	141.85	146.23
1400	55	64.38	68.79	80.46	85.95	88.16	123.28	127.76	133.38	137.86	142.35	147.97	152.45
1600	63	67.08	71.59	83.36	88.96	91.21	128.86	133.46	139.18	143.77	148.36	154.08	158.67
1800	71	69.49	74.00	85.77	91.37	93.63	133.73	138.33	144.05	148.64	153.24	158.96	163.56
2000	79	72.19	76.80	88.67	94.38	96.68	139.32	144.02	149.85	154.55	159.24	165.08	169.77
2200	87	77.41	82.21	94.54	100.48	102.88	144.91	149.71	155.65	160.45	165.25	171.20	175.99
2400	94	79.91	84.71	97.03	102.98	105.38	149.78	154.58	160.53	165.33	170.13	176.08	180.88
2600	102	82.71	87.61	100.04	106.10	108.55	155.37	160.27	166.33	171.23	176.13	182.19	187.10
2800	110	85.51	90.52	103.05	109.22	111.72	160.95	165.96	172.13	177.13	182.14	188.31	193.32
3000	118	88.01	93.02	105.55	111.72	114.22	165.82	170.83	177.01	182.01	187.02	193.19	198.20
3200	126	90.81	95.92	108.55	114.84	117.39	171.41	176.52	182.81	187.91	193.02	199.31	204.42
3400	134	93.61	98.82	111.56	117.96	120.56	177.00	182.21	188.61	193.82	199.03	205.42	210.64
3600	142	96.11	101.32	114.06	120.46	123.06	181.87	187.08	193.48	198.69	203.91	210.31	215.52
3800	150	98.91	104.23	117.07	123.58	126.23	187.46	192.77	199.28	204.60	209.91	216.42	221.74
4000	157	101.71	107.13	120.07	126.69	129.40	193.05	198.46	205.08	210.50	215.92	222.54	227.96

System

Open system with manual control unit
(1:1 Gearing System), Tilt Rod, Cord Drum,
Chain operated, White powder Coated Aluminium rail.
Fixings are Universal Bracket Top or Face Fix

Chain

Std = Chain Nickel Silver or Gold Metal or
White Plastic or Black Plastic

Sizing

Max W 2600mm x **D** 4000mm (subject to weight)
Min W 250mm x **D** 250mm
Hem 13mm Left & Right / Bottom 35mm

Panels

No Joins (single panel): < 1350mm / 3 Panels
(2 vertical Joins): 1351mm up to 2600mm
(Left 20% Middle 60% Right 20%)
N.B. Dependant on fabric roll width

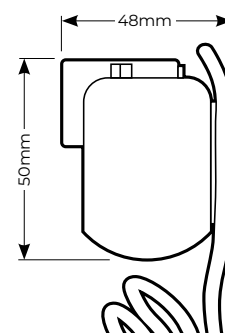
Bottom Bar

25mm Aluminium Bar sealed in 35mm bottom pocket

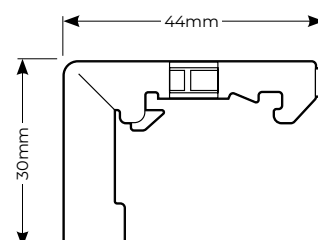
Chain Length

Standard child safety rules apply, subject to fitting
height 1500mm from floor

Including bracket



Bracket



Motors £125 | 1 Channel £25 | 5 Channel £30 | 15 Channel £35 | USB Charger cable Only £12